



FALL MEETING

OCTOBER 19-21, 2011

Hotel Monteleone

214 Royal Street

New Orleans, Louisiana 70130

504.523.3341



GULF OF MEXICO
RESEARCH INITIATIVE
RESEARCH BOARD

Gulf of Mexico Research Initiative
Research Themes

- **Physical distribution, dispersion, and dilution of petroleum (oil and gas), its constituents, and associated contaminants (e.g., dispersants) under the action of physical oceanographic processes, air-sea interactions, and tropical storms.**

- **Chemical evolution and biological degradation of the petroleum/dispersant systems and subsequent interaction with coastal, open-ocean, and deep-water ecosystems.**

- **Environmental effects of the petroleum/dispersant system on the sea floor, water column, coastal waters, beach sediments, wetlands, marshes, and organisms; and the science of ecosystem recovery.**

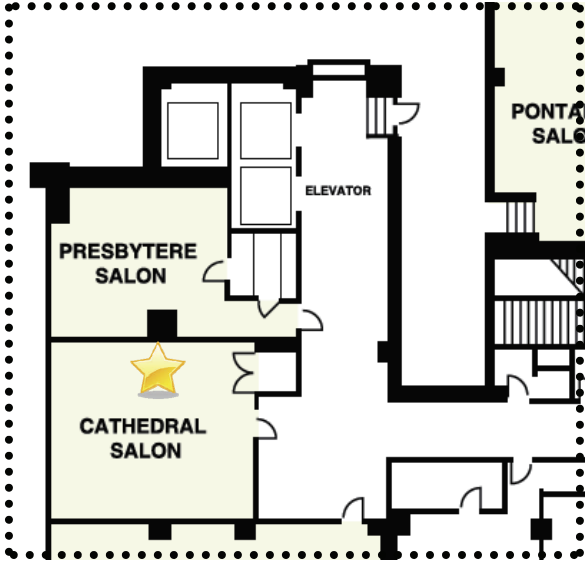
- **Technology developments for improved response, mitigation, detection, characterization, and remediation associated with oil spills and gas releases.**

- **Fundamental scientific research integrating results from the other four themes in the context of public health.**

Hotel Monteleone



Mezzanine Layout



2nd Floor Layout

Wednesday, October 19 (Queen Ann Ballroom)

- 0730-0830** **Full Breakfast** (Queen Ann Parlor/Ballroom)
- 0830-0840** **Welcome and Administrative Details** (Drs. Denis Wiesenburg and David Shaw)
- 0840-0850** **Introductory Overview** (Dr. Rita Colwell, Research Board Chair)
- 0900-1150** **Year-1 Consortia Presentations** (50 minutes each; 30 minutes + 20 minutes Q&A)
- 0900-0950 FIO-Led Consortia Year-1 Overview**
- 0950-1010** **Coffee Break**
- 1010-1100 LSU-Led Consortia Year-1 Overview**
1100-1150 NIH-Led Consortia Year-1 Overview
- 1150 - 1200** **Research Board Comments**
- 1200-1330** **Lunch** Queen Ann Ballroom
- 1330-1510** **Year-1 Consortia Presentations** (50 minutes each; 30 minutes + 20 minutes Q&A)
- 1330-1420 NGI-Led Consortia Year-1 Overview**
1420-1510 MESC-Led Consortia Year-1 Overview
- 1510-1530** **Coffee Break**
- 1530-1630** **Data Management Discussion**
- 1630-1700** **GRI Research Board Discussion** (restricted to GRI Board, AIBS, and GRI AU)

Dinner on your own in New Orleans

Thursday, October 20 (Queen Ann Ballroom)

- 0730-0830** Full Breakfast (Queen Ann Parlor/Ballroom)
0830-0900 Research Board Comments
0900 – 1015 New Consortia Overviews (3 @25 minutes each; 20 minutes plus 5 minute Q&A)
- 0900-0925** The Effects of the Macondo Oil Spill on Coastal Ecosystems (LUMCON, Lead)
0925-0950 Ecosystem Impacts of Oil and Gas Inputs to the Gulf (ECOGIG) (U. Miss, Lead)
0950-1015 Consortium for Advanced Research on Hydrocarbon Transport in the Environment (CARTHE) (U. Miami, Lead)
- 1015 - 1030** Coffee Break
1030-1145 New Consortia Overviews (3 @25 minutes each; 20 Minutes plus 5 minute Q&A)
- 1030-1055** The Science and Technology of Dispersants as Relevant to Deep-Sea Releases (Tulane, Lead)
1055-1120 The Impact of Biological, Physical and Chemical Processes on the Fate of Oil Spills - Bridging Small Scale Processes with Meso-Scale Modeling (U. Texas, Lead)
1120-1145 Center for Integrated Modeling and Analysis of Gulf Ecosystems (C-IMAGE) (USF, Lead)
- 1145-1200** Research Board Comments
1200-1330 Lunch Queen Ann Ballroom
1330-1420 New Consortia Overviews (2 @25 minutes each 20 minutes Plus 5 minute Q&A)
- 1330-1355** Gulf Integrated Spill Response Consortium (GISR) (Texas A&M, Lead)
1355-1420 Deepsea to Coast Connectivity in the Eastern Gulf of Mexico (Deep-C) (Florida State, Lead)
- 1420-1500** Q&A session
1500-1530 Coffee Break
1530-1600 RFP-III Process and Status (Dr. Ken Halanych)
1600-1630 Education and Outreach Discussion
1630-1700 GRI Board Discussion (restricted to GRI Board, AIBS, and AU)
- Dinner on your own in New Orleans

Friday, October 21, 2011

0730-0830 **Breakfast** (Queen Ann Parlor/Ballroom)

0830-1000 **Concurrent Sessions**

Data Base Management Subcommittee¹
(Queen Ann Ball room)

**Joint Communications and Outreach
Sub-committee**¹ (Queen Ann Parlor)

**Research Board meeting with RFP-I
Directors**² (Cathedral Salon - 2nd Floor)

1000-1015 **Coffee Break** (Mezzanine Lobby)

1015-1100 **Concurrent Sessions**

**Joint Data Base Management and
Communications/Outreach Subcommittees**¹
(Queen Ann Ballroom)

Research Board, if needed
(Cathedral Salon)

1100-1200 **Research Board wrap-up (closed)**
(Cathedral Salon)

1200 **Meeting adjourn**

1. Consortium representatives are encouraged to attend the 0830 Data Base Management Subcommittee and Joint Communications and Outreach Subcommittee meetings and the 1015 Joint Data Base Management and Communications/Outreach Subcommittee meeting.

2. At 0830 Consortium directors or their representatives are invited to meet with members of the Research Board (who are not involved in the other committee meetings) for open discussions.

GRI CONTACT INFORMATION

Research Board— Contact griquestions@aibs.org

Administrative Unit and RFP III Grants Unit:

Michael Carron, Ph.D. , Director

Michael.Carron@gomri.org

228.688.2687

Kevin Shaw, Program Manager

Kevin.Shaw@gomri.org

251.223.2080

RFP-I Grants Unit:

Derek Herr, Financial Reporting Lead

DHerr@oceanleadership.org

202.787.1626

Kristin Yarincik, Program Management Lead RFP I

KYarincik@oceanleadership.org

202.448.1237

Jeanine Hubler, Research Agreement Lead

JHubler@oceanleadership.org

202.787.1631

RFP-II Grants Unit:

Leigh Zimmermann, Program Management Lead RFP II

LZimmermann@oceanleadership.org

202.448.1225

Rita R. Colwell, PhD

Research Board Chair
Distinguished Professor
University of Maryland College Park and
Johns Hopkins University Bloomberg School of Public Health

Margaret Leinen, PhD

Research Board Vice Chair
Associate Provost for Marine and Environmental Initiatives of Florida Atlantic University
Executive Director of Harbor Branch Oceanographic Institute

Debra S. Benoit, MEd

Director of Research and Sponsored Programs
Nicholls State University

Peter G. Brewer, PhD

Senior Scientist
Monterey Bay Aquarium Research Institute

Richard E. Dodge, PhD

Professor, Dean, Nova Southeastern University Oceanographic Center
Executive Director, National Coral Reef Institute

John W. Farrington, PhD

Scientist Emeritus, Woods Hole Oceanographic Institution

Kenneth M. Halanych, PhD

Alumni Professor & Coordinator, Marine Biology Program
Auburn University

David Halpern, PhD

Senior Advisor for Earth Science Research, NASA Headquarters
Senior Research Scientist, California Institute of Technology/NASA Jet Propulsion Laboratory

William T. Hogarth, PhD

Interim Director
Florida Institute of Oceanography
College of Marine Science, University of South Florida

Jörg Imberger, PhD

Director, Centre for Water Research
Professor of Environmental Engineering
The University of Western Australia

Raymond L. Orbach, PhD

Director
Energy Institute at The University of Texas at Austin

Jürgen Rullkötter, PhD

Professor of Organic Geochemistry
Institute of Chemistry and Biology of the Marine Environment (ICBM)

David R. Shaw, PhD

Vice President for Research and Economic Development
Mississippi State University

John Shepherd, PhD

Professorial Research Fellow
School of Ocean & Earth Science, National Oceanography Centre
University of Southampton

Bob Shipp, PhD

Chair, Department of Marine Science
University of South Alabama

Burton Singer, PhD

Courtesy Professor
Emerging Pathogens Institute
University of Florida

Ciro V. Sumaya, MD, MPHTM

Professor, Health Policy and Management
Cox Endowed Chair in Medicine
Founding Dean, School of Rural Public Health
Texas A&M Health Science Center

Denis Wiesenburg, PhD

Vice President for Research
The University of Southern Mississippi

Charles Wilson, PhD

Professor and Executive Director
Louisiana Sea Grant College Program
Louisiana State University

Dana Yoerger, PhD

Senior Scientist
Woods Hole Oceanographic Institution

NOTE: CONTACT RESEARCH BOARD MEMBERS THROUGH GRIQUESTIONS@AIBS.ORG



**GULF OF MEXICO
RESEARCH INITIATIVE
RESEARCH BOARD**